

## MATERIALS:

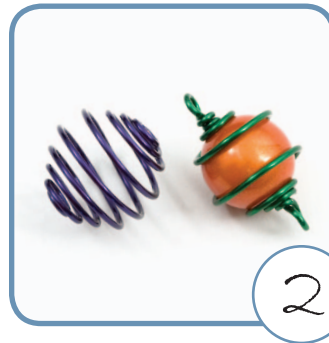
1 or +	Copper wire (20 gauge)
...	Various beads
1	Flat nose pliers
1	Round nose pliers
1	Nylon jaw pliers
1	Ruler
1	"Spiral" Beading technique
1	"Loop" Beading technique



## Preparation:



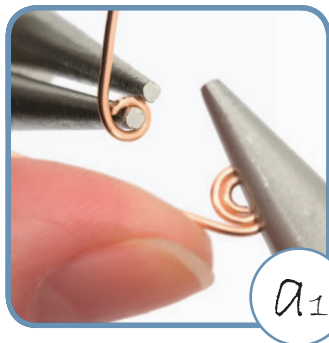
1- Measure and cut a length of wire about 30 or 40 cm (12 to 16 in).



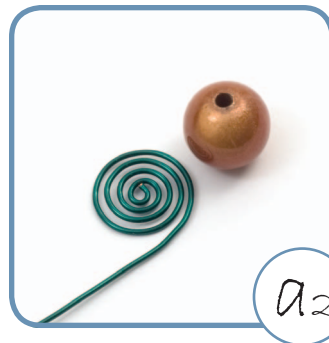
2- Choose the type of project: either wrapping or bead cage, as desired for your project.

## How to do:

### Bead cage:



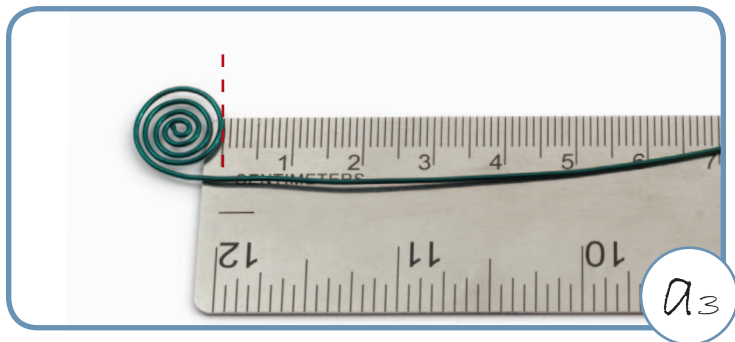
a1- With the round nose pliers, make a small loop at one of the ends of the wire. Hold the loop with the flat nose pliers or the nylon jaw pliers and form an open spiral. (See Beading techniques "Spiral").



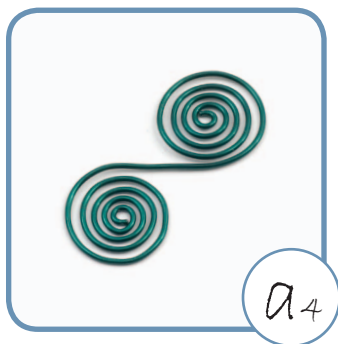
a2- Place the bead next to the spiral to measure the size. The spiral should measure a bit larger than the diameter of the bead (about 1 mm).



It is always a good idea to smooth the wire before working with it. Hold one end with the flat nose pliers and smooth with your fingers or with nylon jaw pliers.



a3- To determine the length of wire used to form the first part of the spiral, place it on the end of your ruler and measure the straight length of wire. Subtract this amount from the original length. For example, if you start with 30 cm of wire and you measure 20 cm, you have used 10 cm to form the 1<sup>st</sup> spiral. Therefore, you will need 10 cm for the second spiral. Cut the excess wire before proceeding with the project.



a4- Repeat steps “a1” and “a2” on the opposite end of the wire to form the second spiral in the opposite direction. It should be the same diameter as the first spiral.



a5- Place one spiral over the other (1). Using a pencil or your round nose pliers, push the center of the spiral towards the exterior (2). This forms the 2 sphere halves.

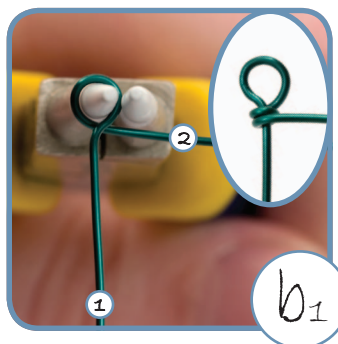


a6- You can either insert a bead (wrapping) or leave it empty (bead cage). If you use a bead, close the two halves around it, adjust the spirals with your fingers.

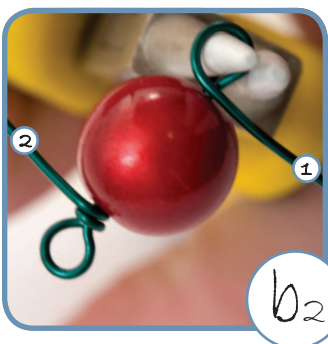


a7- You can also insert a eye pin made from the same wire, or a contrasting colour.

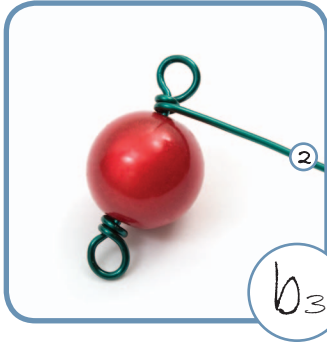
## Wrapping:



b1- Measure and cut a 30 cm to 40 cm (12 to 16 inch) length of wire. Measure about a third of the way from the end of the wire, and using a round nose pliers, form a loop (See Beading techniques “Loop”). Hold tightly the loop with the same pliers and wrap the longer wire (1) around the shorter wire (2) twice.



b2- Slide the bead onto the shorter wire (1), then form a second loop the same as the first loop.



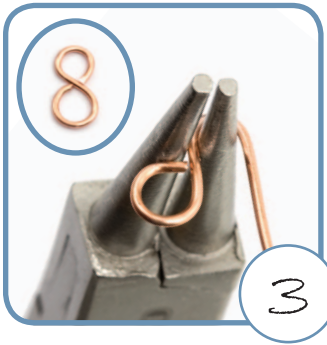
b3- Turn the shorter wire twice around itself and cut the excess. DO NOT CUT THE LONGER WIRE.



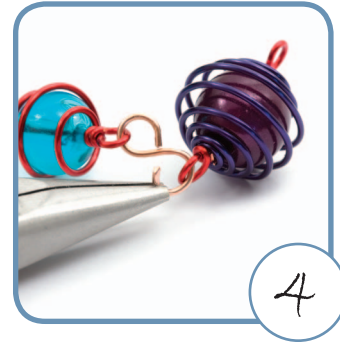
b4- With the longer wire, form a spiral around the bead. To finish off the spiral, wrap the end of the wire around the bottom of the first loop. Cut the excess wire.

## ● Assembly:

### Figure "8" link:



3- Cut a 3 cm length of wire and form two loops in opposite directions, forming a figure "8". Cut any excess wire.



4- Repeat this step, as necessary, to join your links together.

